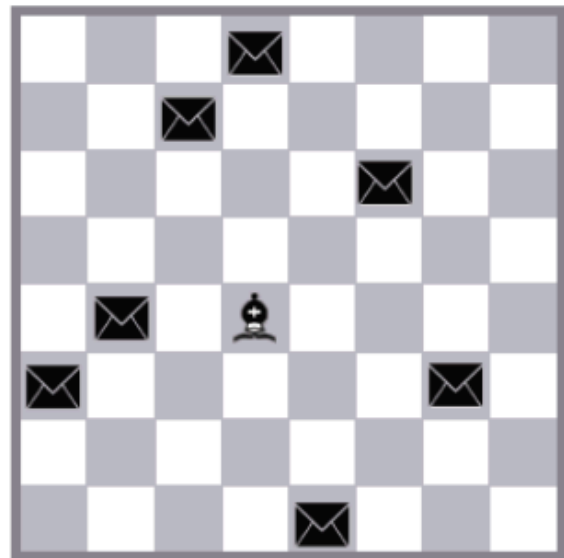
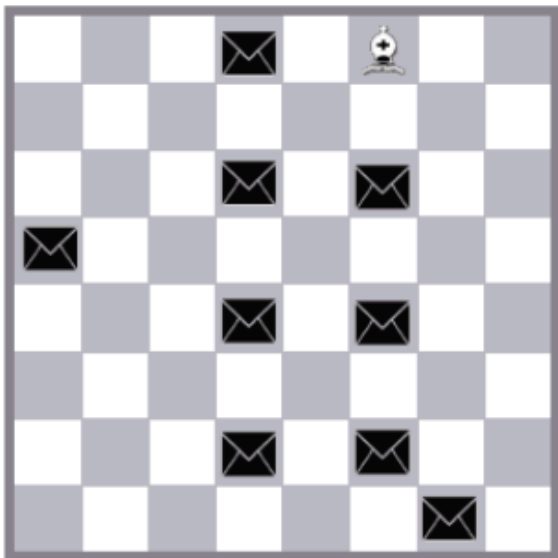
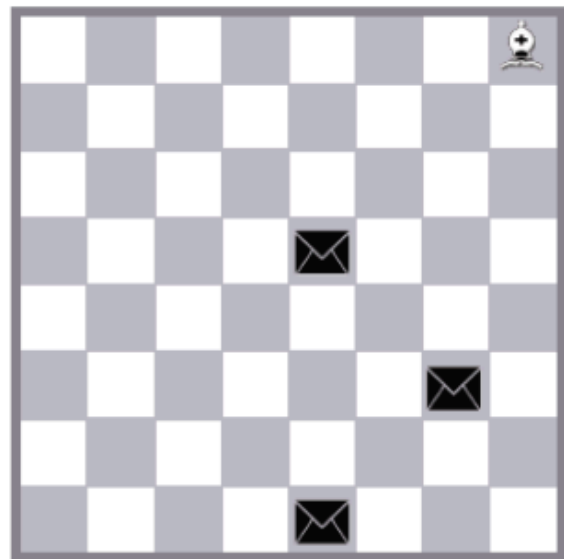
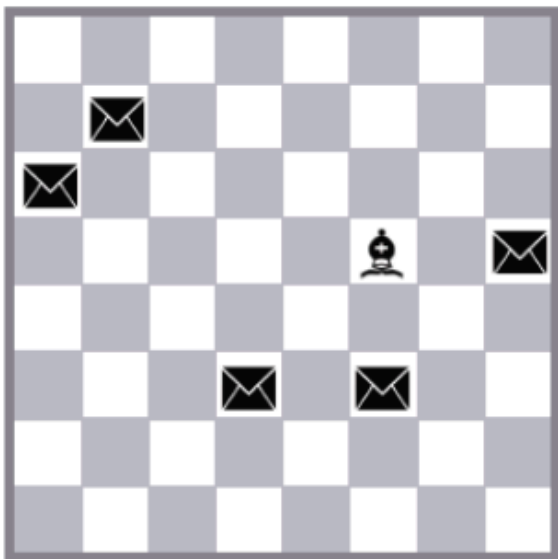


# CHESS HOMEWORK

Mark the way in which the Bishop  
can collect all the envelopes




# Chess & Math Worksheet

$$+ 2$$



---

$$+ 3$$



---

$$+ 1$$




---

$$+ 1$$



---

$$+ 5$$



---

$$+ 4$$



---

$$- 10$$



---

$$- 10$$



---

$$- 3$$



---

$$+$$



---

$$+$$



---

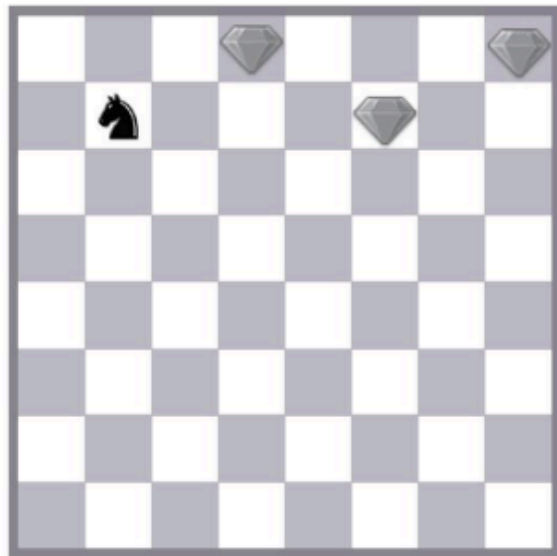
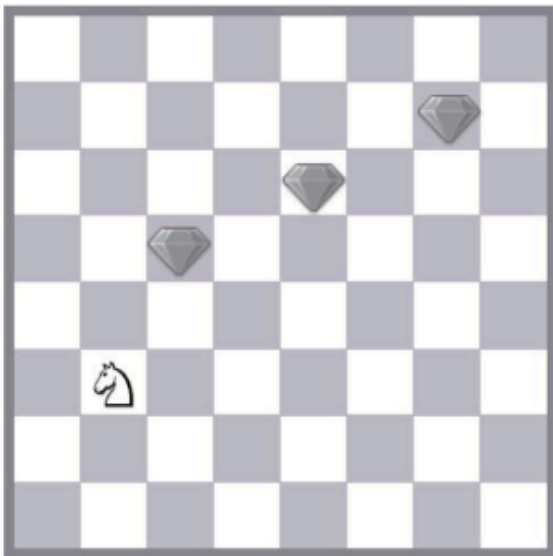
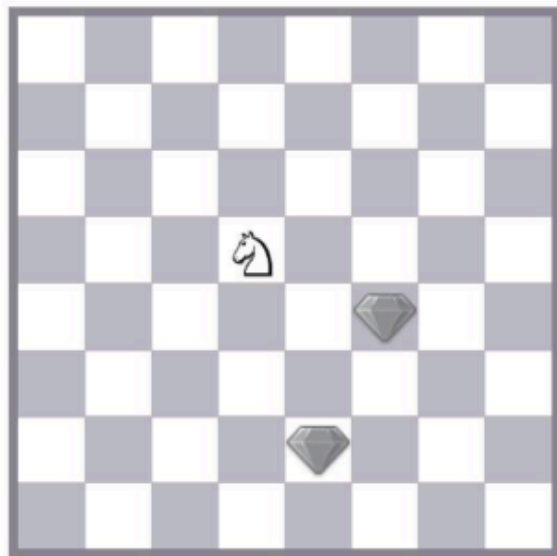
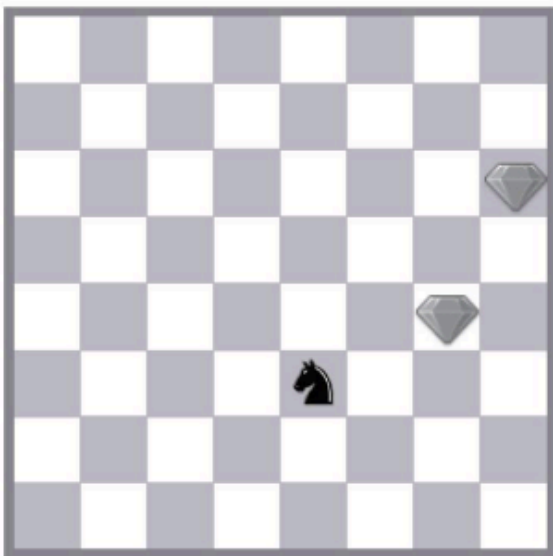
$$+$$



---

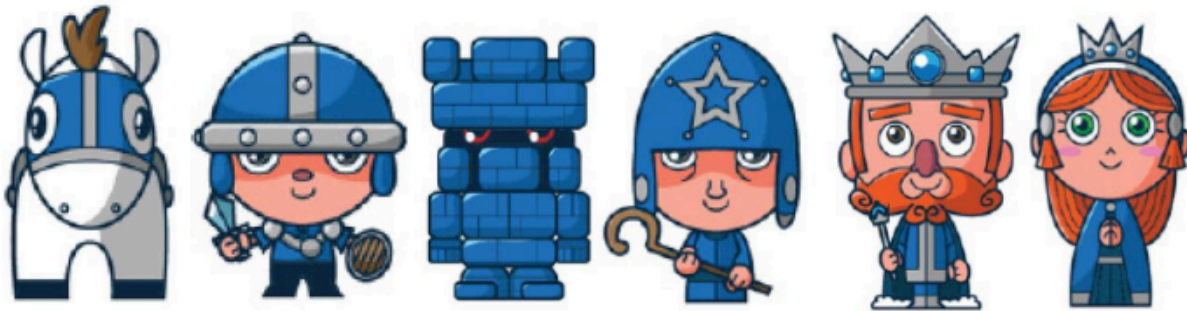
Show the Knight route in  
collecting the brilliants



Circle the board with the correct starting position, and figure out what is wrong with all the other ones





Draw a line between the chess piece  
and its correct value





100    5    9    1    3

Are these pieces equal in value?  
Put the correct symbol

> = <

> = <



  

> = <



example

> = <

> = <

> = <